



PRODUCTS

Mail Center

Active Document Management



CUSTOMER SATISFACTION BEGINS

with a reliable flow of information. Your mail center is the hub, linking customers, vendors and company personnel. Moving documents efficiently. Providing effective flow of hard copy circulation with greater accuracy and speed. At Hamilton Sorter, we give your mail center needs priority status—with no compromise to the quality that has earned Hamilton Sorter its place as the leading manufacturer of MailCenter and Communications Furniture. And, all of our components carry our limited lifetime warranty backed by over 30 years of integrity and experience.



Our aluminum extruded frame prevents the unsightly effects of a ding-and-chip-prone environment and protects laminate worksurfaces.

Ours alone, the pin cam locking system safely secures sort module at any position on the console. Easily readjusts toward front or rear to accommodate the 'reach' of varying personnel.

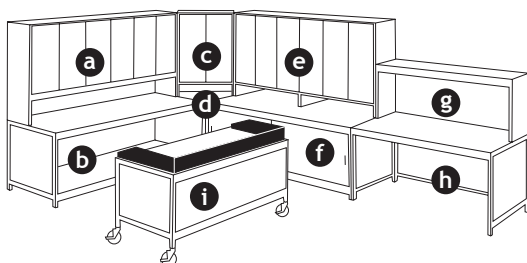


LOADED WITH ESSENTIALS, YET COMPACT. This L-shaped mail center maximizes productivity within a minimal walking space.

Components reconfigure easily and are sized for a variety of needs. Sort modules are available in six heights and widths.



Full depth shelf supports at 1" intervals are the best 'guides' in the industry permitting quick and easy adjustments as needed.



SHOWN

- a. 06-30E12 Sort Module, 12" riser
- b. CS843630B Console with full shelf, 3" clearance
- c. 02-36E6 Sort Module, 6" riser
- d. CT363630B Corner Console, 3" clearance
- e. 06-36E6 Sort Module, 6" riser
- f. CC843630B Cabinet Console, 3" clearance
- g. E601224 Platform, 24" high
- h. CT603630B Basic Console, 3" clearance
- i. Multi-Function Utility Console:
 - CT603630RW
 - (2) DRB-L Brackets
 - (2) DR36AS Sides
 - (1) DR60 Back
 - (4) WHL-50SWB Wheels



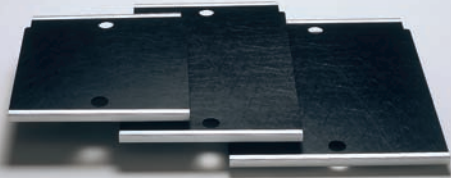
Color-coding enhances accuracy. Shelves are complete with full-width, encased index strips. Simplified word processing software adds professional appearance. All colors will be shipped or you may specify a selection from Green, Light Green, Magenta, Canary, Orange, Gold, Blue, Electric Yellow, Electric Pink or White.

WALL-TO-WALL EFFICIENCY AND PRODUCTIVITY.

In just a 12 ft. square this U-shaped mail center configuration provides for a continuum of tasks from inbound bulk sort and fine sort to outgoing preparation, weighing and metering. Shown here is a unique 84" console that fully accommodates larger meter machines – just one of a family of consoles sized to fit a range of equipment space needs.

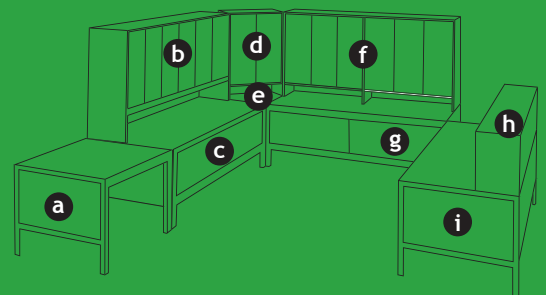


To provide for a variety of uses, flexible plastic shelves are available in three sizes in Gray, Black or Brown. Standard, 10 3/4" W x 11 3/4" D
 Legal, 10 3/4" W x 15 7/8" D
 Oversize, 12 3/4" W x 15 7/8" D



SHOWN

- a. CT363630 Corner Console, 9" clearance
- b. 06-30E12 Sort Module, 12" riser
- c. CS843630 Console with full shelf, 9" clearance
- d. 02-36E6 Sort Module, 6" riser
- e. CT363630 Corner Console, 9" clearance
- f. 06-36E6 Sort Module, 6" riser
- g. CC843630 Cabinet Console, 9" clearance
- h. E841224 Platform, 24" high
- i. CS843630 Console with full shelf, 9" clearance



DOCUMENT MANAGEMENT SPECIALTIES



EXECUTIVE MAIL STATION EMC693030 Credenza & 05-30E12 Sort Module

Drop off and retrieve mail within departments at our self-contained station. Full-laminate finish blends tastefully with executive suite furnishings.



Convenient under-counter storage hides supplies and mail drop-off bins.

MANIFEST SHIPPING STATION MAN6030

At 60" wide, this station manages all automated shipping needs with ample space for monitor, keyboard and printers. High pressure laminate worksurface resists wear and tear of day-to-day use.

Also available in 48" width, MAN4830 and 72" width, MAN7230.





BULK SORT UNIT

AB482061

For a speedy first sort, the angled shelves of our bulk sort unit provide space for numerous easy-access bins.

FREESTANDING SORT MODULE

FSM481276SB

With our quick-adjust shelving system, you'll stock and retrieve forms, literature and supplies with ease from this space-saving, multi-purpose unit. Available with standard, legal or oversize shelves. Shown with bottom storage area.



COLOR SELECTIONS

FUNCTIONAL AND DURABLE

Hamilton Sorter's collection of decorative laminates allows you to coordinate worksurfaces and vertical sides for a custom look. Only the finest high pressure laminates are used on worksurfaces to eliminate chips and dents.

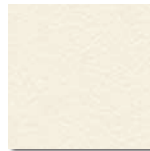
Colors shown are approximate representations. For precise colors, ask your dealer for a Hamilton Sorter laminate chain.

Extruded aluminum for console tables available in the following finishes: Anodized Aluminum, Silver Vein and Copper Vein.

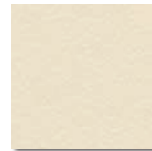
Colors shown are approximate representations of actual laminate. For actual laminate colors please call Customer Service at 800-503-9966.

STANDARD COLORS

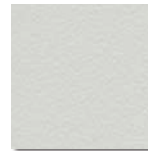
SOLIDS



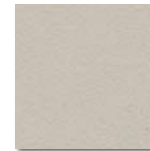
ANTIQUE WHITE
013



NATURAL ALMOND
031



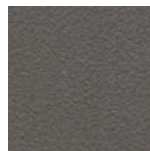
FASHION GREY
035



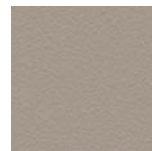
GREY MOSS
090



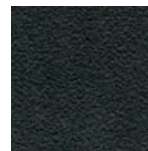
DOVE GREY
002



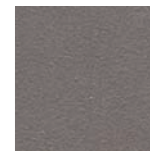
SLATE GREY
068



SHADOW
096



BLACK
007

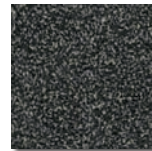


INGOT GREY
006

PATTERNS



CANYON ZEPHER
093

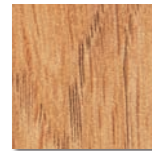


GRAPHITE NEBULA
030

WOODGRAINS



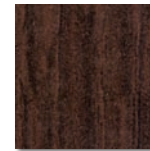
KENSINGTON MAPLE
036



SOLAR OAK
089



HAMPTON MAPLE
098



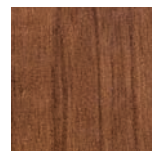
CAFELLE
099



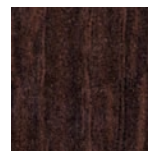
WINDSOR MAHOGANY
001



WOODLAWN CHERRY
003



SHAKER CHERRY
097



EMPIRE MAHOGANY
078

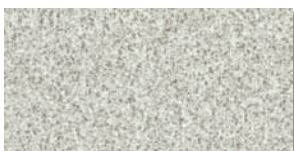


COGNAC
091



OILED CHERRY
055

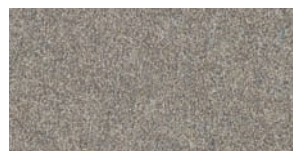
DESIGNER WORKSURFACE COLORS



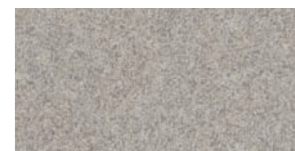
WHITE NEBULA
086



DESERT ZEPHYR
095



TWILIGHT ZEPHYR
092



MISTED ZEPHYR
094



ADDREX
ADDRESSER SALES COMPANY
Innovative Mailing Technologies Since 1970
13864 Bennett Road • Cleveland, OH 44133
440-230-1455 • Fax: 440-237-2914
Toll Free: 800-899-4402
www.addrex.com